

# 16-port SOHO Gigabit switch, VLAN, Plug and Play

Live-16GT



Gigabit RJ45

Flow Control

Plug & Play

Hardware VLAN

Surge / ESD protection

Rack-Mountable

## Overview

### More than just a Plug-and-Play 16-Port Gigabit Switch VLAN and Flow Control supported

Designed as plug-and-play unmanaged Gigabit switch, the price of AirLive Live-16GT switch is very affordable. Moreover, it provides additional and useful functions such as Port Isolation/VLAN Security and Flow Control that you can set easily by its DIP switch. The Gigabit switch is easy to manage and maintain with its fan less design at 19" rack-mountable size, the product can be widely used in home, SOHO office, or as client switch for SMB.

## Features

- 16-port, each port delivers Gigabit high speed
- Port Isolation/VLAN Mode: Enhanced Security
- Flow Control
- Setting easily by hardware DIP switch
- Surge Protection; ESD Protection
- 19" Rack-mountable



DIP Switch Control

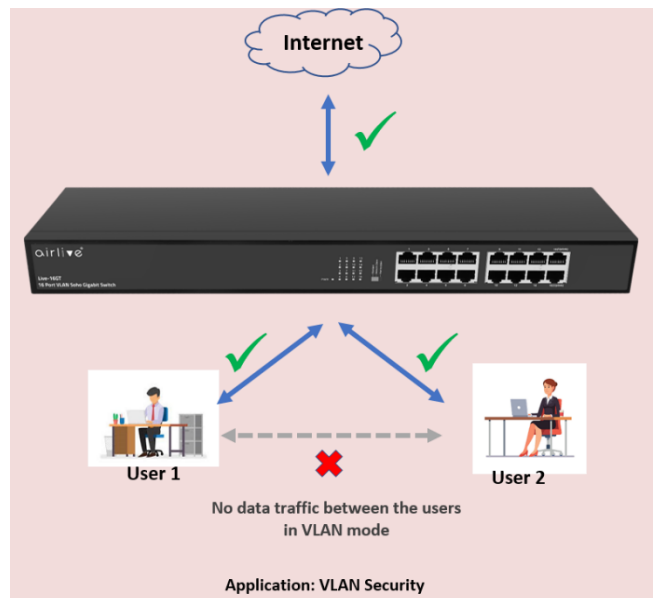
## Valued Added Optional Functions

### Port Isolation/VLAN Mode: Enhanced Security

This additional feature gives the switch extra security for the users connected to it. The VLAN mode works as Port isolation, meaning that when it's enabled the users connected to the LAN ports cannot communicate with each other but only communicate with the UP-Link ports (port 15/16). This way there is an extra layer of security and data will not be shared between the users. This can be used in a small office to separated guests from the company network or in a home to separate tenants.

### Network Clone/Flow Control: Maintain Stable Connectivity

The IEEE802.3x flow control function of all ports is disabled, which is suitable for some environments that use broadcast or multicast to transmit data, such as school video teaching, Internet café, etc



Model	AirLive Live-16GT
<p><b>Hardware</b></p> <ul style="list-style-type: none"><li>• <b>Device Interface:</b> 16 x 10/100/1000Mbps RJ45, Auto MDI/MDI-X</li><li>• <b>Standard</b> IEEE802.3u 100Base-TX IEEE802.3ab Gigabit 1000Base-T IEEE802.3x</li><li>• <b>LED Indicators:</b> PWR (power supply), Link (Network Link)</li><li>• <b>Lighting Surge Protection:</b> IEC61000-4-2 (ESD), IEC61000-4-5(Surge) Power:CM±4kV/DM±2kV; Port: ±4kV , ESD: ±8kV Contact discharge, ±15kV Air discharge</li><li>• <b>Mechanical</b> Metal, 1U</li></ul> <p><b>Switch Architecture   Performance</b></p> <ul style="list-style-type: none"><li>• <b>Switching architecture: Store and Forward</b> Switch Capacity: Back-plan up to 32Gbps Pack forward rate; 23.88Mpps MAC Address: 8K Jumbo Frame: 10K Transfer mode: Store and forward</li></ul> <p><b>DIP Switch Control</b></p> <ul style="list-style-type: none"><li>• <b>Port Isolation/VLAN:</b> Port isolation mode. In this mode ports (1~14) cannot communicate with each other and can only communicate with the UP-Link port 15/16.</li><li>• <b>Standard:</b> Normal mode, all port can communicate with each other, the transmission distance is within 100m, the transmission rate is 10M/100/1000M adaptive.</li><li>• <b>Network Clone:</b> The IEEE802.3x flow control function of all ports is disabled, which is suitable for some environments that use broadcast or multicast to transmit data, such as school video teaching, Internet café, etc..</li><li>• <b>Note:</b> Port Isolation and Network Clone mode cannot be used at the same time.</li></ul>	<p><b>Power Supply</b></p> <ul style="list-style-type: none"><li>• <b>Power Supply:</b> AC 100~240V</li><li>• <b>Power Consumption:</b> Max power consumption &lt;9.26W</li></ul> <p><b>Environment</b></p> <ul style="list-style-type: none"><li>• <b>Operating Temperature:</b> 0°C~+40°C</li><li>• <b>Storage Temperature:</b> -40°C~+70°C</li><li>• <b>Operating Humidity:</b> 10%~90%, non-condensing</li><li>• <b>Storage Humidity:</b> 5%~90%, non-condensing</li></ul> <p><b>Standard package of switch</b></p> <ul style="list-style-type: none"><li>• <b>Product size:</b> 44x 11 x 4.4 cm(L*W*H)</li><li>• <b>Package size:</b> 45.8 x 15.5 x 5.1 cm (L*W*H)</li><li>• <b>Product Weight/Package Weight</b> G.W:1.6kgs</li><li>• <b>Package content:</b> 1 x Switch, 1 x Power Cable, 1 x Brackets (pair)</li></ul> <p><b>Standard carton package</b></p> <ul style="list-style-type: none"><li>• <b>Quantity:</b> 10 pcs / 1 carton</li><li>• <b>Dimensions</b> 47.8 x 33.5 x 28.6 cm</li><li>• <b>Carton Weight</b> 17.5Kgs</li></ul> <p><b>Ordering Information</b></p> <ul style="list-style-type: none"><li>• <b>Model:</b> Live-16GT: 16 x 10/100/1000Mbps RJ-45 Switch</li><li>• <b>Name:</b> 16-port Gigabit Switch, VLAN, Plug and Play, 19" rack-mountable</li></ul>

\* Specification will be changed without prior notice

